

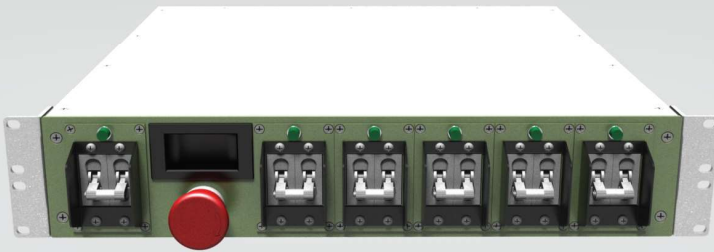




Spartan Series

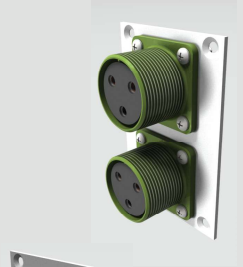
Where Ruggedization and Flexibility Meet

The Spartan Series rugged PDUs are ideal for military and ship-board applications. The modular design creates a configurable and engineered solution for AC power distribution without the need for customization. Enjoy advanced features such as EMI filtering, EPO, MOV surge protection, and our proprietary NTM technology (nuisance trip mitigation) achieved through power on output sequencing.



Product Highlights

- * AC Current ranges from 20 amps to 60 amps
- * Configurable input/output connectors
- * Configurable circuit breaker scheme
- * Built to meet MIL 810, MIL 167, MIL 901, MIL 1399 (others by request)
- * NTM technology (nuisance trip mitigation)
- * EMI/RFI filtering
- * MOV voltage/surge suppression
- * Panel metering for volts/amps and LED indication
- * Create 1000s of combinations from a standard part
- * Rapid turnaround time



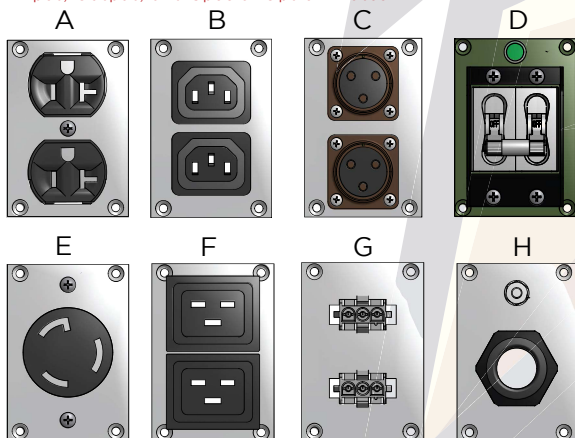
Master Specification

Standard and Optional Specifications

PHYSICAL	Dimensions	3U (H) x 19" (W) x 18" (D)
INPUT	Voltage	120VAC, 208VAC, or 240VAC
	Current	15A, 20A, 30A, 40A, 50A or 60A
	Frequency	50Hz, 60Hz or 400Hz
	Phase	Single or Dual
	Connector	5-15P, 5-20P, L5-20P, L5-30P, MS5015 (15A), MS5015 (30A) or Hardwire
	Power Cord	Any Length from 1ft to 100ft
OUTPUT	Connector	5-15R, 5-20R, L5-20R, L5-30R, C-13, C-19, MS5015 (15A), MS5015 (30A) or Hardwire
METERING	LCD Panel	Volts/Amps
PROTECTIONS	Circuit Protection	Matched Output Circuit Breakers (see matched breaker table on page 3)
	In-Rush	NTM Technology (Nuisance Trip Mitigation) Achieved Through Output Sequencing
	EPO	On Unit EPO Button
	Surge/Over Voltage	MOV Protection on all Output Connectors
FILTERING	EMI/RFI	EMI/RFI Filtering
COMPLIANCE	MIL Standards	Built to Meet MIL 167, MIL 810, MIL 901, MIL 1399. Others Upon Request.
ENVIRONMENTAL	Operating Temperature	-5C to +60C
	Storage Temperature	-20C to +80C
	Operating Humidity	0% - 95% Non-Condensing
	Altitude	1500 Meters Above Sea Level
OPTIONS	Input	Dual Redundant Input
	Remote	Remote Control and Monitoring via Ethernet
	Sequencing	Sequencing is Standard. Daisy Chain Sequencing is Optional.

Configurable Plate Options

Input, Output, and Special Option Plates



- A = 5-15R/5-20R Duplex
- B = C-13's
- C = MS5015 (15A or 30A)
- D = Output Circuit Breaker
- E = L5-20R/L5-30R
- F = C-19's
- G = Daisy Chain Sequencing
- H = Input Strain Relief w/ Ground Stud

Matched Circuit Breaker Table

Input/Output Circuit Breakers are Matched to the Input/Output Connector

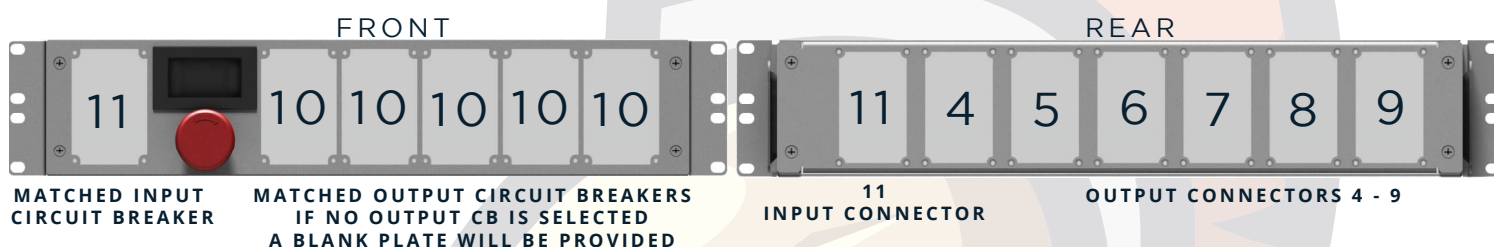
Location	Current	Breaker Size
Input	15 Amps	15 Amps
Input	20 Amps	20 Amps
Input	30 Amps	30 Amps
Input	40 Amps	40 Amps
Input	50 Amps	50 Amps
Input	60 Amps	60 Amps
Output	15 Amps	15 Amps
Output	20 Amps	20 Amps
Output	30 Amps	30 Amps

Output circuit breakers are per plate with a maximum of 5.
EX: Plate 4 has 2 x 5-15R's and 1 x 15 amp matched circuit breaker



Part Number Configurator

Create a Customized Solution



1

Type
 L = Land
 S = Shipboard
 O = Outdoor

2

Voltage
 1 = 120V (LNG)
 2 = 120V (LLG)
 3 = 208V (LLG)
 4 = 240V (LNG)

3

Current
 1 = 15 Amps
 2 = 20 Amps
 3 = 30 Amps
 4 = 40 Amps
 5 = 50 Amps
 6 = 60 Amps
 7 = Other

4-9

Output
 1 = 2 x 5-15R
 2 = 2 x 5-20R
 3 = 2 x C-13
 4 = 2 x C-19
 5 = 2 x MS16 Shell
 6 = 2 x MS22 Shell
 7 = 1 x L5-20R
 8 = 1 x L5-30R
 9 = Other

10

Output CB
 1 = Yes
 2 = No

11

Input
 1 = 5-15P
 2 = 5-20P
 3 = L5-20P
 4 = L5-30P
 5 = MS5015 (15A)
 6 = MS5015 (30A)
 7 = Hardwire
 8 = Other

12

Special Options
 1 = Dual Redundancy
 2 = Remote Control*
 3 = Output Daisy Chain Sequencing*
 *requires 1 rear slot

*Comes with matched CBs

13

Power Cord
 XX-Feet

Standard Features

- Included on All PDUs
- * EMI Filtering
 - * NTM Technology (no daisy chain)
 - * Heavy Duty Rack Ears
 - * LED Indication
 - * EPO
 - * LCD Meter for Volts/Amps
 - * Built to Meet MIL Standards
 - * MOV Surge Protection
 - * -5C to 60C Operating Temp

Matched Circuit Breaker Table

Input/Output Circuit Breakers are Matched to the Input/Output Connector

Location	Current	Breaker Size
Input	15 Amps	15 Amps
Input	20 Amps	20 Amps
Input	30 Amps	30 Amps
Input	40 Amps	40 Amps
Input	50 Amps	50 Amps
Input	60 Amps	60 Amps
Output	15 Amps	15 Amps
Output	20 Amps	20 Amps
Output	30 Amps	30 Amps

Output circuit breakers are per plate with a maximum of 5.
 EX: Plate 4 has 2 x 5-15R's and 1 x 15 amp matched circuit breaker